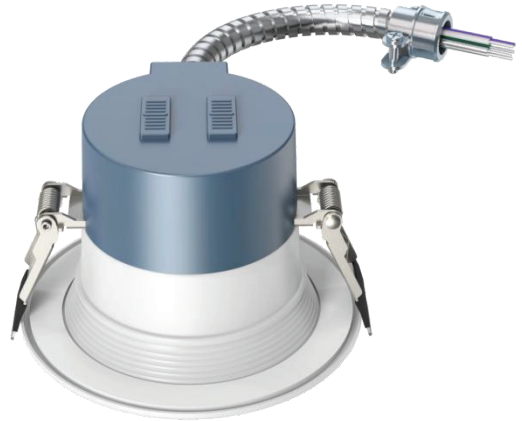




## Features :

- Housing Construction: Aluminum Housing with smooth or baffle, white finish.
- ETL & ES certified.
- AC Input:100-277V.
- 1-10V Dimmable.
- CCT and Power Adjustable
- High efficiency LM80 SMD LEDs,CRI90.
- Suitable for wet locations.

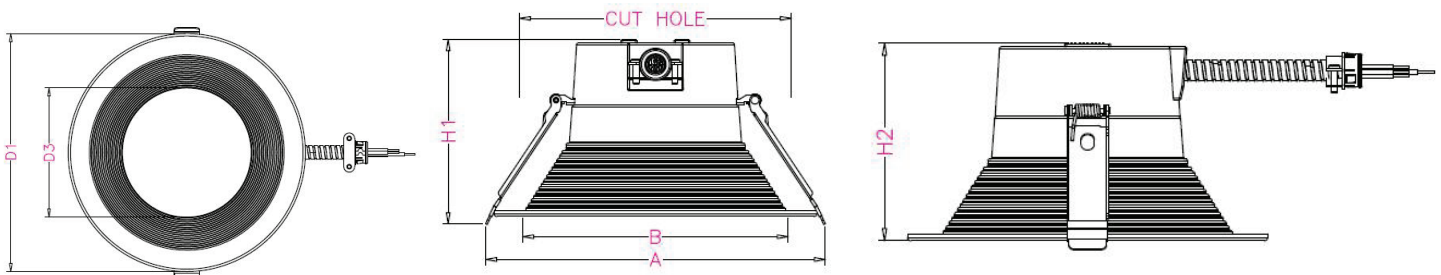


## Application:

- ◆ Residential, Bathrooms.
- ◆ Property management.
- ◆ Office, Multi-family.
- ◆ Hospitality, Healthcare etc..



## Product Dimension:



| D1   | D3    | A     | B     | H1    | H2    | Cut HOLE |
|------|-------|-------|-------|-------|-------|----------|
| 5.2" | 3.37" | 5.53" | 3.99" | 3.68" | 3.49" | 4.65"    |



## Specifications

### LED Commercial Down Light

|                    |  |
|--------------------|--|
| Model:             | SZ-DL16W4-CD-ACP                         |
| Wattage:           | Adjustable 10W/13W/16W                   |
| Size:              | 4 inch                                   |
| CCT:               | Adjustable:2700K/3000K/3500K/4000K/5000K |
| CRI:               | 90                                       |
| Beam Angle:        | 105°                                     |
| Lumens:            | 125LM/W                                  |
| PF:                | >0.9                                     |
| Input:             | 100-277V 50/60Hz                         |
| Waterproof Rating: | IP44                                     |
| Certification:     | ETL & ES                                 |
| Warranty:          | 5 years                                  |

## Package

| Size              | Qty/Carton | Gross Weight |
|-------------------|------------|--------------|
| 19.13*19.09*9.29" | 18         | 9Kg          |

## Installation instructions

### RETROFIT INSTALLATION

1. Shut off power at the source of the fixture housing into which you are installing fixture. Remove existing trim and CFL or Incandescent bulb  
**Note: Follow all federal and local regulations when disposing of lamps and removed components.**

2. Measure ceiling opening to ensure that the edge of the luminaire will cover the entire opening and still sit firmly in the ceiling.

3. Select desired Wattage and CCT using adjustment switches on fixture.

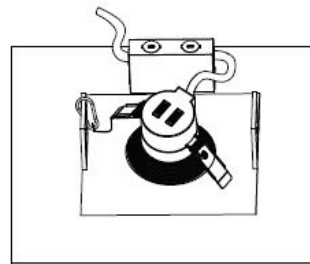
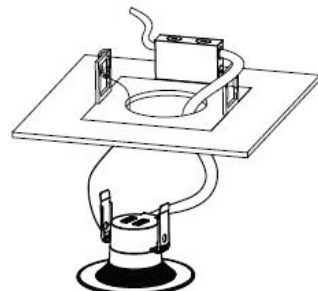
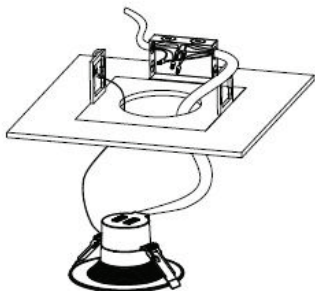
4. Attach carabiner safety clip to the existing fixture housing.



5. Insert lamp conduit into J-box and wire to power source (Black to Live, white to Neutral, Violet to 0-10V dimming positive, Gray to 0-10V dimming negative). Reattach J-box cover when done.

6. Squeeze the two housing clips so they are in an upright position and then insert lamp into housing.

7. Once lamp is inside housing, release housing clips and continue to push lamp into housing until securely fixed and flush with ceiling. Restore power.





## INSTALLATION INSTRUCTIONS(continued)

### RETROFIT INSTALLATION

1. Shut off power at the source of the fixture housing into which you are installing fixture.

2. Create ceiling opening to ensure that the edge of the luminaire will cover the entire opening and still sit firmly in the ceiling.

3. Select desired Wattage and CCT using adjustment switches on fixture.

4. Attach carabiner safety clip to secure location in ceiling.

5. Insert lamp conduit into J-box and wire to power source (Black to Live, white to Neutra, Violet to 0-10V dimming positive, Gray to 0-10V dimming negative). Reattach J-box cover when done.

6. Squeeze the two housing clips so they are in an upright position and then insert lamp into opening.

7. Once lamp is inside opening, release housing clips and continue to push lamp into opening until securely fixed and flush with ceiling. Restore power.

