

Features :

- A flexible downlight solution supports surface mounting and retrofit installation ..
- UL, certified.
- High quality Iron shell with frosted PC diffuser.
- CCT selectable version optional
- High efficiency LM80 SMD LEDs.
- Provide true color rendering with 90+ CRI.

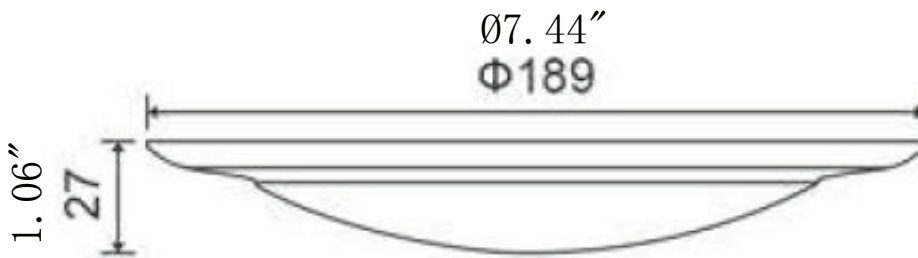


Application:

- ◆ Residential.
- ◆ Property management.
- ◆ Office, Multi-family.
- ◆ Hospitality, Healthcare etc..



Product Dimension:

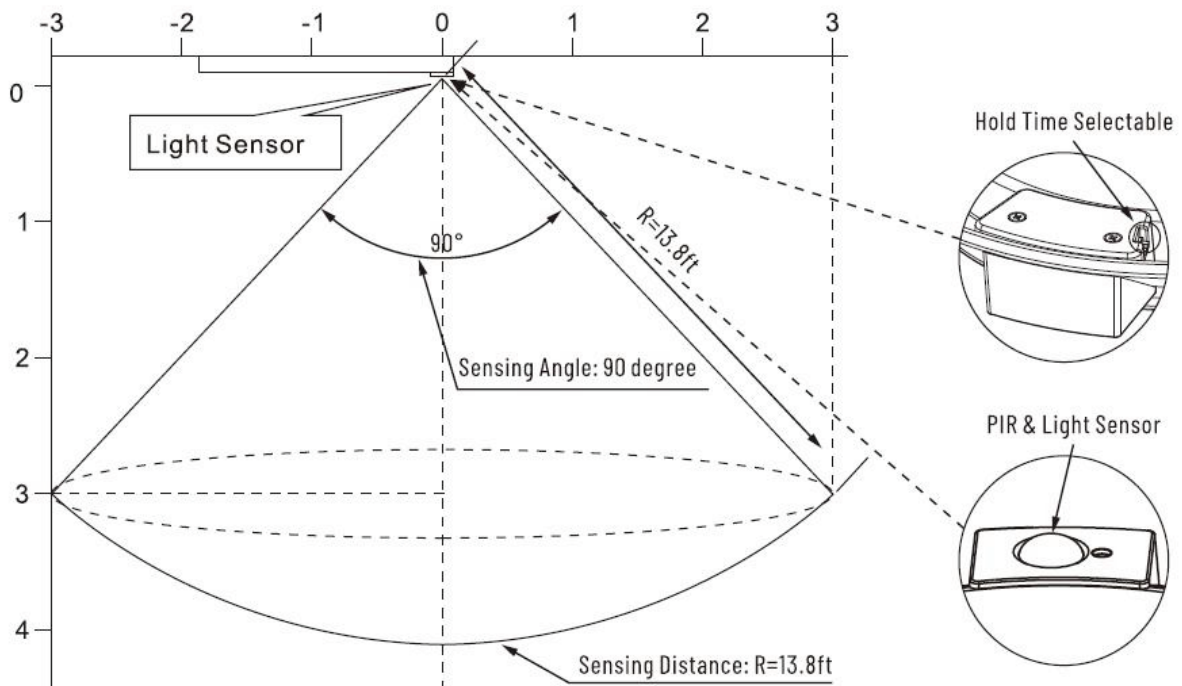


Specifications

LED Ceiling Light

Model:	SZ-DL15W6-SP (5CCT) (CL+PL)
Wattage:	15W
Size:	6 inch
CCT Selectable:	3000K/4000K/5000K
CRI:	90
Beam Angle:	120°
Lumens:	>1100LM
PF:	>0.9
Driver:	120V 50/60Hz
Sensor:	PIR Sensor + Light Sensor
Certification:	UL
Warranty:	5 years

Motion sensor working principle



Package

Size	Qty/Carton	Gross Weight
18.62*16.67*16.3"	40	12.4Kg

Installation instructions

A. SURFACE MOUNT

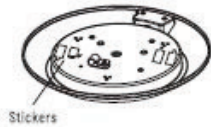


Turn Power Off

1: Before installing make sure power is turned off.

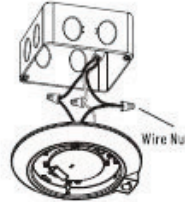


2: Remove the lens by anticlockwise.



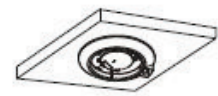
Stickers

3: Tear off the 4" or 6" J-BOX install hole label from the fixture.



4: Connect the supply wires to the wires on the fixture using the three wire nuts included in the packaging.

- White-Neutral (White)
- Black-Hot (Black)
- Green-Ground (Copper wire)



5: Align appropriate holes in the mounting fixture with the holes in the J-BOX depending on the size of the box. Use the longer screws for a deep J-BOX or the shorter screws for a shallow J-BOX to attach the mounting fixture, flush with the ceiling.



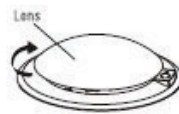
6. Turn on power and test light.
BEFORE PROCEEDING:
Slide the CCT selection switch to choose from three color temperatures (3000K, 4000K, 5000K). Try each CCT to determine which suits your room.
7. Reattach lens by twisting clockwise.

B. RETROFIT

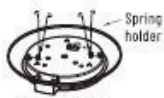


Turn power off

1. Turn off the circuit breaker that provides power to the light switch for the recessed lights.
2. Locate the housing.
• Remove previous fixture, fixture may be hot so allow time to cool after turning off power



3. Remove the lens by anticlockwise.



5" Recessed Can

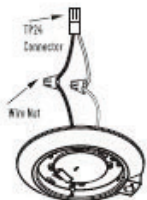


6" Recessed Can

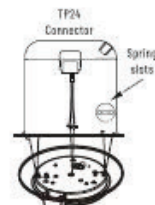
4. Place the springs into the keyhole slots on the back of the fixture using the Metric screws provided. Using a screwdriver, gently tighten in place.
• Slot placement should be chosen based on can size (5" or 6").



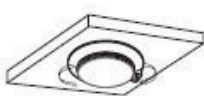
5. Connect the Disk wires to either the TP24 adapter wires using the wire nuts provided.
• White to white; Black to black
• It is highly recommended that a licensed electrician installs the ground wire to the box, if not already included in your existing can.



6. Connect the TP24 adapter to the TP24 connector inside the recessed can.
7. Attach ground wire to the grounding screw located inside the can.
* E26 Adapter do not included



8. Pinch springs and line up trim ring with opening.
9. Hook disk springs into housing.
• Strong springs. Use caution when compressing springs to fit inside can. Springs can bounce back quickly and cause injury.



10. Push disk into recessed can until secure
11. Complete the installation by screwing the lens back into place (counter clockwise).
12. Turn on circuit breaker and test the light.