



LED Flood Light



Product Features

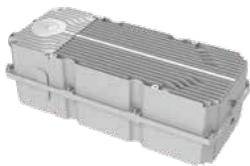
All structures are made of AL, the whole Light corrosion resistance is higher and can be applied to harsh environments, such as the seaside environment.

The max light efficiency is up to 160 LM/W.

The 1800W (two-mode) light body is only 23 kg, without a driver.

Opto-Electrical Separation

The Flood Light features a photoelectric separation design that keeps the driver separated from the heat generated by the sink, minimizing the impact of heat on its performance. Furthermore, the driver box mounting bracket allows for flexible installation in any suitable location. Additionally, the driver can be conveniently installed in a distribution cabinet, providing ease of maintenance and labor savings.



Applications

Outdoor / Indoor / Industrial

- Sports & recreational fields
- Large-scale outdoor events
- Industrial and construction sites
- Parking lots and garages
- Crane lighting
- Security and outdoor surveillance



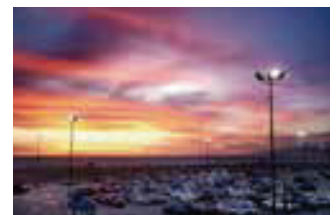
Football Pitch



Sports Complex

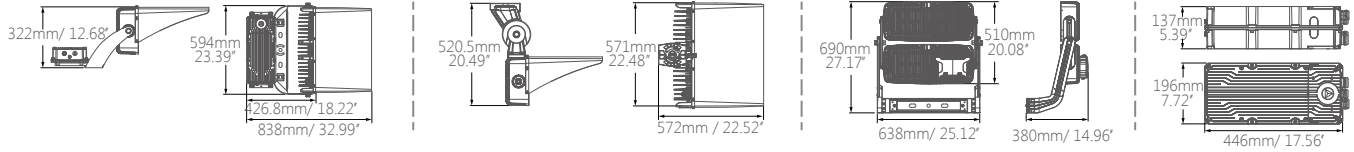


Airport

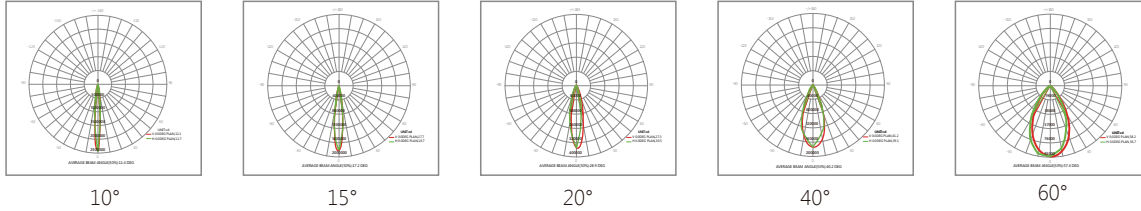


Parking Lot

Dimension (mm/in)



Photometric Diagrams



Mounting (Options)

U-Bracket Mounting

Top Mounting Arm Mounting (Optional)



Parameters

Model No.	SZ-FL 800W/900W/1000W	SZ-FL 1500W/1600W/1800W
Wattage	800W/ 900W/ 1000W	1500W/ 1600W/ 1800W
Light Efficiency	150Lm/W-160Lm/W	
CCT	2700K / 3000K / 4000K / 5000K / 5700K / 6500K	
Beam Angle	10° / 15° / 20° / 40° / 60°	
CRI	≥70	
SDCM	≤6	
Input Voltage	AC100-277V / AC200-480V / AC277-480V	
Power Factor	0.95	
THD	<20%	
Percent Flicker (%)	<1%	
Surge Protection	10KV / 20KV Optional	
Protection Against Electric	Class I	
IP	IP66	
IK	IK10	
EPA	181 ft ² (Without Visor), 3.61 ft ² (Medium Visor)	
Operating Temp Ranger	-40°C~-+50°C / -40°F~-+122°F	
Intelligent Control	0-10V, 1-10V, DALI, DMX512, SYNAPSE	
Lifetime	100,000H (L70B50@25°C) / 100,000H (L70B50@77°F)	
Net Weight (kg/lbs)	Lamp: 135 kg±0.5 (29.76±1.1 lbs) Driver Box: 6 kg±0.5 (13.23±1.1 lbs)	Lamp: 23 kg±0.5 (50.71±1.1 lbs) Driver Box: 10 kg±0.5 (22.05±1.1 lbs)
Dimension (mm/in)	U-Bracket: 838x 594x 322mm (32.99x 23.39x 12.68in)	U-Bracket: 638x 690x 380mm (25.12x 27.17x 14.96in)
Packing Dimension (mm/in)	655x 595x 345mm (25.79x 23.43x 13.58in)	800x 700x 290mm (31.50x 27.56x 11.42in)
Warranty	5 years	
Certificate	UL / DLC / CE / CB / ENEC / RoHS	
Specification	LED: Bridgelux, Osram, Samsung Driver: Inventronics, uPowerTek, Moso	
Material	Structure: Die-casting / High Thermal Conductivity AL Finish: Powder Coated Lens: Polycarbonate Color: Gray	