

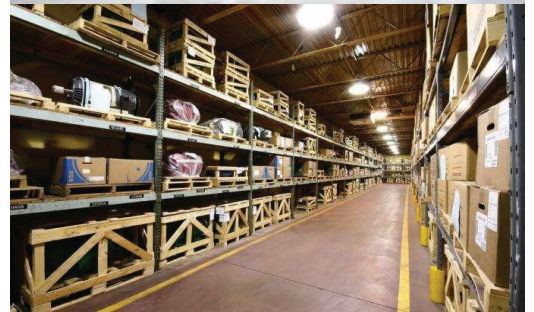


LED UFO High Bay

Model: SZ-HB240W-HVH (MS) -ACP

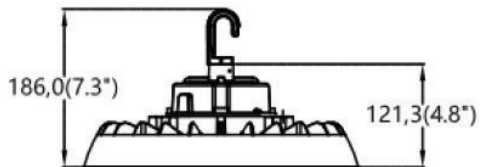
Advantage:

- UL & DLC certificate
- 2835 Chip, high CRI
- Input voltage **277-480VAC**
- No UV or IR in the beam
- Easy to install and operate
- Energy saving, long lifespan
- Light is soft and uniform, safe to eyes
- Instant start, NO flickering, NO humming
- Green and eco-friendly without mercury.

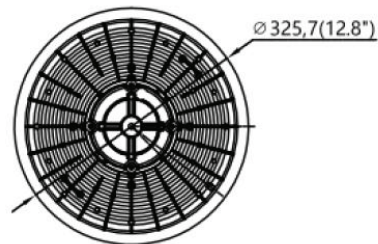


Application:

Warehouse, factory and workshops;
Highway toll station and gas station;
Exhibition hall;
Gymnasium and supermarkets, etc.



240W





Product Specifications

Product Name	LED UFO High Bay
Light Type	SZ-HB240W-HVH(MS)-ACP
Dimension	Φ12.8*7.3"

Technical Characteristic

Color temperature	Adjustable CCT:4000K/5000K/5700K or 4000/5000/6000K
CRI	>80
Lumen	36000LM
Lumen Efficacy	150LM/W
Input Power	Adjustable power: 150W/200W/240W
Viewing Angle	110 Degree
Input Voltage	277-480V 50/60Hz
Driver model	China Brand driver, (0-10Vdc Dimmer, Surge-protective 6KV)
Motion sensor	Microwave sensor
PF	>0.9
Waterproof Rating	IP65

Materials

LED Type	2835
LED QTY	800PCS
Housing	Aluminum(ADC12)
Housing color	Black
Cover	PC
Operating Temperature	-40°C TO 45°C
Operating Humidity	10%-90% RH
Storage Temperature	-40°C TO 80°C

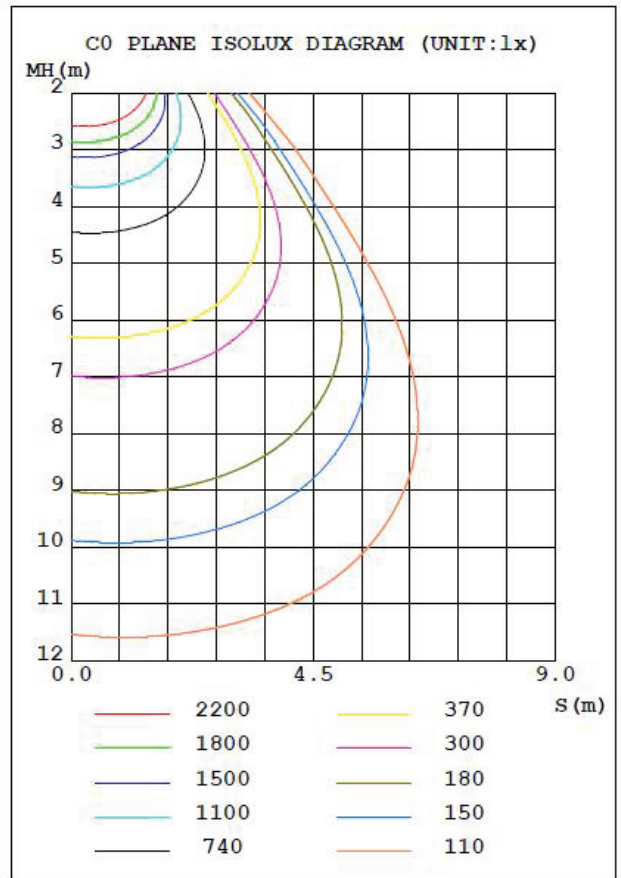
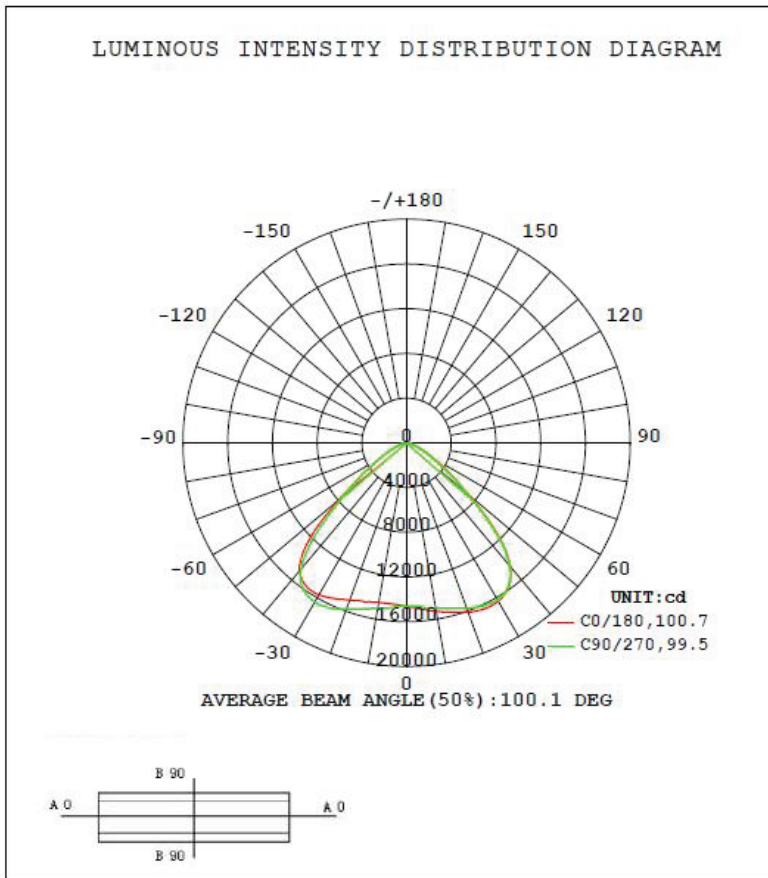
Others

Storage Humidity	10%-95%
Application	Outdoor
Safety Certification	UL & DLC
Warranty Time	5 Years



Light Distribution Testing Parameters

DATA OF LAMP		PHOTOMETRIC DATA Eff: 163.14 lm/W			
Model	SZ-HB240W-HVH(MS)-ACP	I _{max} (cd)	16452	S/MH (C0/180)	1.50
NOMINAL POWER (W)	240	LOR (%)	100.0	S/MH (C90/270)	1.45
RATED VOLTAGE (V)	277	TOTAL FLUX (lm)	38799	η UP, DN (C0-180)	0.5, 49.1
NOMINAL FLUX (lm)	38799.3	CIE CLASS	DIRECT	η UP, DN (C180-360)	0.6, 49.8
LAMPS INSIDE	1	η up (%)	1.2	CIBSE SHR NOM	1.50
TEST VOLTAGE (V)	277	η down (%)	98.8	CIBSE SHR MAX	1.50



Package

Model	Net Weight	Size	Qty/Carton	Weight/Carton
SZ-HB240W-HVH(MS)-ACP	2.46 KG	13.23*13.23*5.9"	1	3.28KG