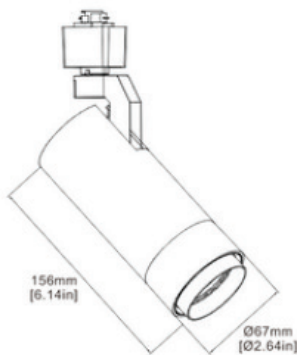


LED Track Light

Model:SZ-TRC15W-CCT



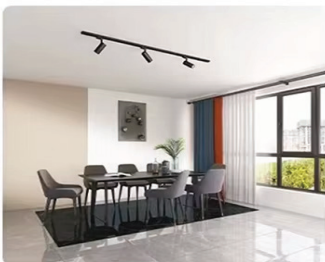
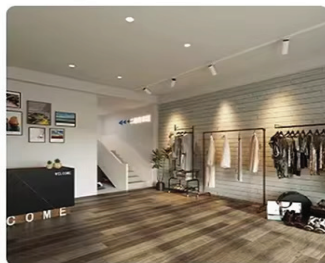
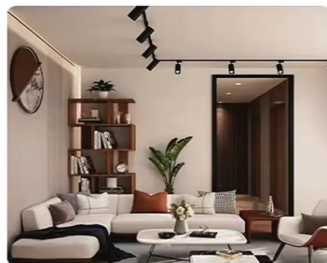
Adapter



JUNO



HALO



OVERVIEW

LED commercial track light, die-casting aluminum lamp body and good heat sink. Juno or Halo adapter is available. Multi-function design: adjustable beam angle from 18° ~60° , 3CCT

FEATURES

Body

Die-casting aluminum body. Variable focus zoom lens 18° ~60° .

LED Characteristics

COB chip ,CRI90, higher lumen output.

CCT range 3000K/4000K/5000K color temperature.

Dimming

100%-10% dimming capability. This fixture is compatible with most of LED TRIAC/ELV dimmers.

Application:

Home Office/Hotel/Residential/Apartment/Supermarket/Mall/Workshop .etc

General Data

Color: matte black / matte white

Installation method: Track mounted

Place of application: Indoor

Dimming option: TRIAC

Track system: 2 Wires 1 Phase / 3 Wires 1 Phase Size

[in]: D2.64*6.14

Technical Data

Rated voltage [V]: 120-277 AC

Rated frequency [Hz]: 50/60

Power [W]: 15

Class of protection against electric shock: II Light

source: LED COB

Luminous flux [lm]: 1400LM

Color temperature: 3000K / 4000K / 5000K Colour rendering index: 90

Service life [h]: 50000

Lighting angle [°]: 18-60

Luminous efficiency of the lamp [lm/W]: 90 Housing material: aluminum die-cast

The fixture is movable horizontally [°]: 350 The fixture is movable vertically [°]: 90

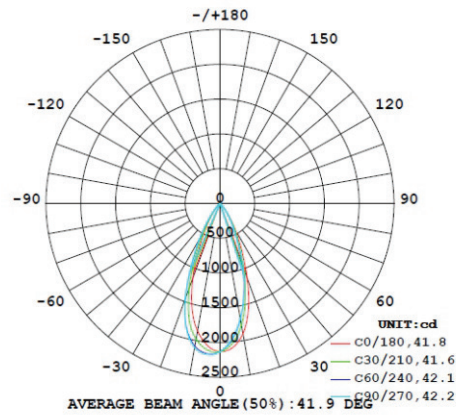
IP class: 20

Warranty: 5 years

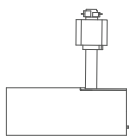
Certification: ETL

PHOTOMETRIC DIAGRAMS

Input Voltage (VAC) Power Factor	120
Factor	0.905
System Level Power (W)	18
Delivered Lumens (Lm)	1438.3
Correlated Color Temp (K)	4000
Color Rendering Index (CRI)	90
Beam Angle	41.9



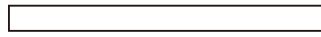
PACKAGE CONTENTS



5 x Track Light



1 x User Guide



1 x Track with power supply and end cap

INSTALLATION GUIDE



CAUTION: Turn off the main power at the circuit breaker before installing the fixture, in order to prevent possible shock.

RISK OF ELECTRIC SHOCK

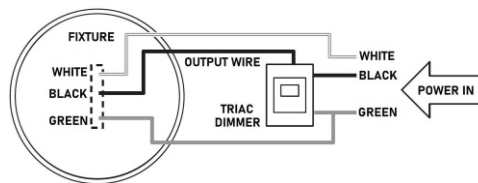
- All electrical connections must be in accordance with local and National Electric code (N.E.C.) standards.
- Obtains the service of a qualified electrician.

RISK OF FIRE

- Keep combustibles and other materials that may burn away from lights.
- Do not operate fixture at temperature higher than 104°F.

Electrical Schematic Diagram

NOTICE: Dimming performance depends on dimmer, dimmer settings (for dimmers with brightness range adjustments), wiring methods, and the number of led fixtures (Total Power of Lights <80% of the Rated Power of the Dimmer).



Installation Steps: 1. Pull down the locking tap and insert "Adaptor contact" into the slot in the track. 2. Rotate adaptor 1/4 turn 90° to locked position. Note: The lamp holder of Grounding tab, polarity side with two pins must point to the track debossed polarity line. 3. Rotate the track fixture of front ring to adjust the beam angle as you need. The beam angle rate is from 18° to 60°. 4. CCT (30K-40K-50K) selectable on the back side of the track head, you can switch the color temperature as you like, then adjust the angle for you need. 5. If need to remove to other position, depress the locking tap and turn 90°, remove to the position then install.

