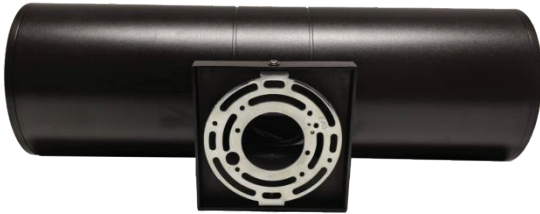


SZ-UPDN-E26

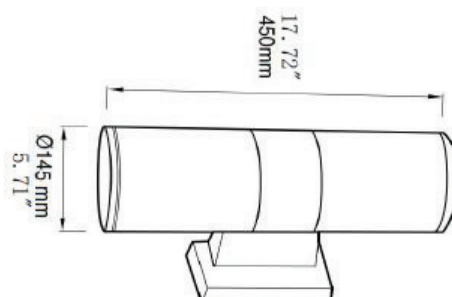


Application:

Outdoor walls, balcony corridors, staircases, etc



Product Dimension:



Specifications

LED Up Downlight

Model:	SZ-UPDN-E26
Wattage:	Max 60W/Each E26 Base
CCT:	optional
Input:	AC100-277V
Lighting source	2 x E26 Lamp holder inside
Size:	Φ5.41*H17.72"
Material:	Aluminum + Glass
IP Rating:	IP65
Color:	Brown
Warranty:	3 Years

Package

Size	Qty/Carton	Gross Weight
19.69*19.69*18.9"	6	15.8Kg